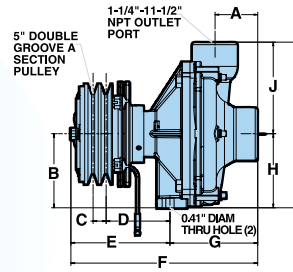


Clutch-Driven, Cast Iron & Stainless Steel

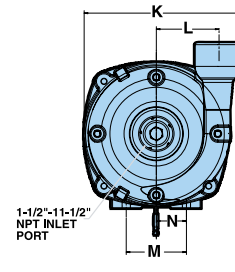
Series 9263C-C and 9263S-C Includes Models: 9263C-C, 9263S-C, 9263C-CR, 9263S-CR, 9263C-C-U and 9263S-C-U



Models 9263C-CR and 9263S-CR



Reverse Rotation

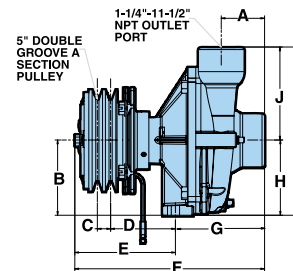


Dimensions		
	Standard	mm
A	2.13	54.0
B	3.69	93.7
C	0.65	16.5
D	3.18	80.7
E	4.93	125.3
F	9.31	236.4
G	4.32	109.7
H	3.69	93.7
I	8.25	209.6
J	4.56	115.9
K	7.78	197.7
L	3.11	78.9
M	3.00	76.2
N	1.50	38.1

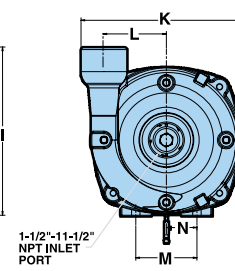
FEATURES

- Available in cast iron and 316 stainless steel
- Pedestal mount with DC clutch drive
- Shaft: 5/8" solid
- Port sizes: 1 1/2" NPT inlet, 1 1/4" NPT outlet
- Max. fluid temperature: 140°F/60°C
- Impeller: Nylon (standard in cast iron); polypropylene (standard in stainless steel)
- Pump shaft rotation: CCW* (CW for - CR models)
- Weight: 23 lbs./10.5 kg
- Pump seals: Cast models – Viton/ceramic standard; Life Guard® silicon carbide (B) and Buna-N ceramic available; Stainless Steel models – Life Guard® silicon carbide standard
- Amp draw: 45 watts at 12 volts
- 220 x 200 universal flange available (U)

Models 9263C-C and 9263S-C



Standard Rotation



Dimensions		
	Standard	mm
A	2.13	54.0
B	3.69	93.7
C	0.65	16.5
D	3.18	80.7
E	4.93	125.3
F	9.31	236.4
G	4.32	109.7
H	3.69	93.7
I	8.25	209.6
J	4.56	115.9
K	7.78	197.7
L	3.11	78.9
M	3.00	76.2
N	1.50	38.1

9263C/S-C-U
Call factory for dimensions
1-800-445-8360

Order Information

Model Number	Max GPM	Max PSI	Max RPM	Rotation
9263C-C†	140	170	5000	CCW
9263C-CR	140	170	5000	CW
9263S-C	140	170	5000	CCW
9263S-CR	140	170	5000	CW
3430-0332	Seal and o-ring repair kit			
3430-0589	Life Guard® silicon carbide seal kit			

† Universal Flange (220 x 200) - Add Suffix "U" (i.e.: 9263C-CU)
Life Guard® silicon carbide seal - Add suffix "B" (i.e.: 9263C-CB)

9263C-C, 9263S-C, 9263C-CR, 9263S-CR, 9263C-C-U, 9263S-C-U

English Standard

RPM	10 PSI		20 PSI		40 PSI		60 PSI		80 PSI		100 PSI		120 PSI		140 PSI	
	GPM	HP	GPM	HP	GPM	HP	GPM	HP	GPM	HP	GPM	HP	GPM	HP	GPM	HP
2400	80	1.9	65	1.8												
3600	105	5.3	105	5.3	92	5.0	50	3.7								
4200	122	8.2	120	7.9	115	7.7	98	7.1	56	5.3						
5000	140	12.6	140	12.6	138	12.6	130	12.2	118	11.6	88	9.9	45	7.2		
5500	140	14.9	140	14.9	138	14.9	135	15.2	130	15.2	118	14.4	90	12.5	60	9.8
6000	140	17.1	140	17.1	140	17.5	140	18.0	135	18.2	132	18	125	18.2	103	16.3

9263C-C, 9263S-C, 9263C-CR, 9263S-CR, 9263C-C-U, 9263S-C-U

Metric

RPM	0.7 BAR		1.4 BAR		2.8 BAR		4.1 BAR		5.5 BAR		6.9 BAR		8.3 BAR		9.7 BAR	
	LPM	HP	LPM	HP	LPM	HP	LPM	HP	LPM	HP	LPM	HP	LPM	HP	LPM	HP
2400	303	1.9	246	1.8												
3600	397	5.3	397	5.3	348	5.0	189	3.7								
4200	462	8.2	454	7.9	435	7.7	371	7.1	212	5.3						
5000	530	12.6	530	12.6	522	12.6	492	12.2	447	11.6	333	9.9	170	7.2		
5500	530	14.9	530	14.9	522	14.9	511	15.2	492	15.2	447	14.4	341	12.5	227	9.8
6000	530	17.1	530	17.1	530	17.5	530	18.0	511	18.2	500	18	473	18.2	409	16.3

*CCW (counterclockwise) CW (clockwise) are determined when looking at the shaft end.